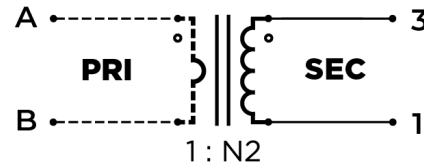


TEST CONDITIONS

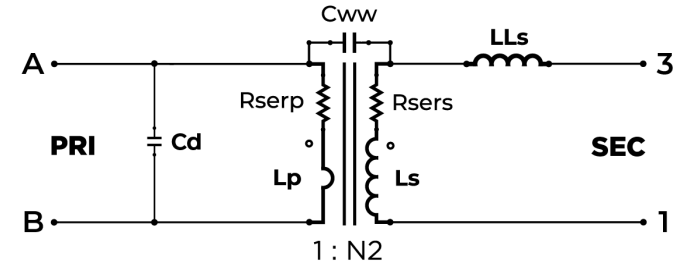
Inductance (L): 1 kHz, 1 V_{RMS}, Series
Leakage Inductance (LLs): 1 kHz, 1 V_{RMS}, Series
Interwinding Capacitance (Cww): —
Series Resistance (Rser): Measured at 25 °C
Cd: Measured by HP4194A equivalent A on secondary

EQUIPMENTS: 4194A, 4285A, 4284A, HOIKI 3541

SCHEMATIC SYMBOL



EQUIVALENT CIRCUIT



Part Number	Lp (A-B)	Ls (3-1)	Rserp	Rsers (3-1)	Cd	Cww	S.R.F (3-1)	LLs (3-1) Shorted (A-B)	Turn Ratio
	<i>uH, Typ.</i>	<i>H, Typ.</i>	<i>n/a</i>	<i>Ω, Typ.</i>	<i>pF, Typ.</i>	<i>n/a</i>	<i>kHz, Typ.</i>	<i>mH, Typ.</i>	<i>A-B : 3-1</i>
CT07-1000	17.32	17.32	N/A	19.88	141.38	N/A	3.17	363	1:1000